



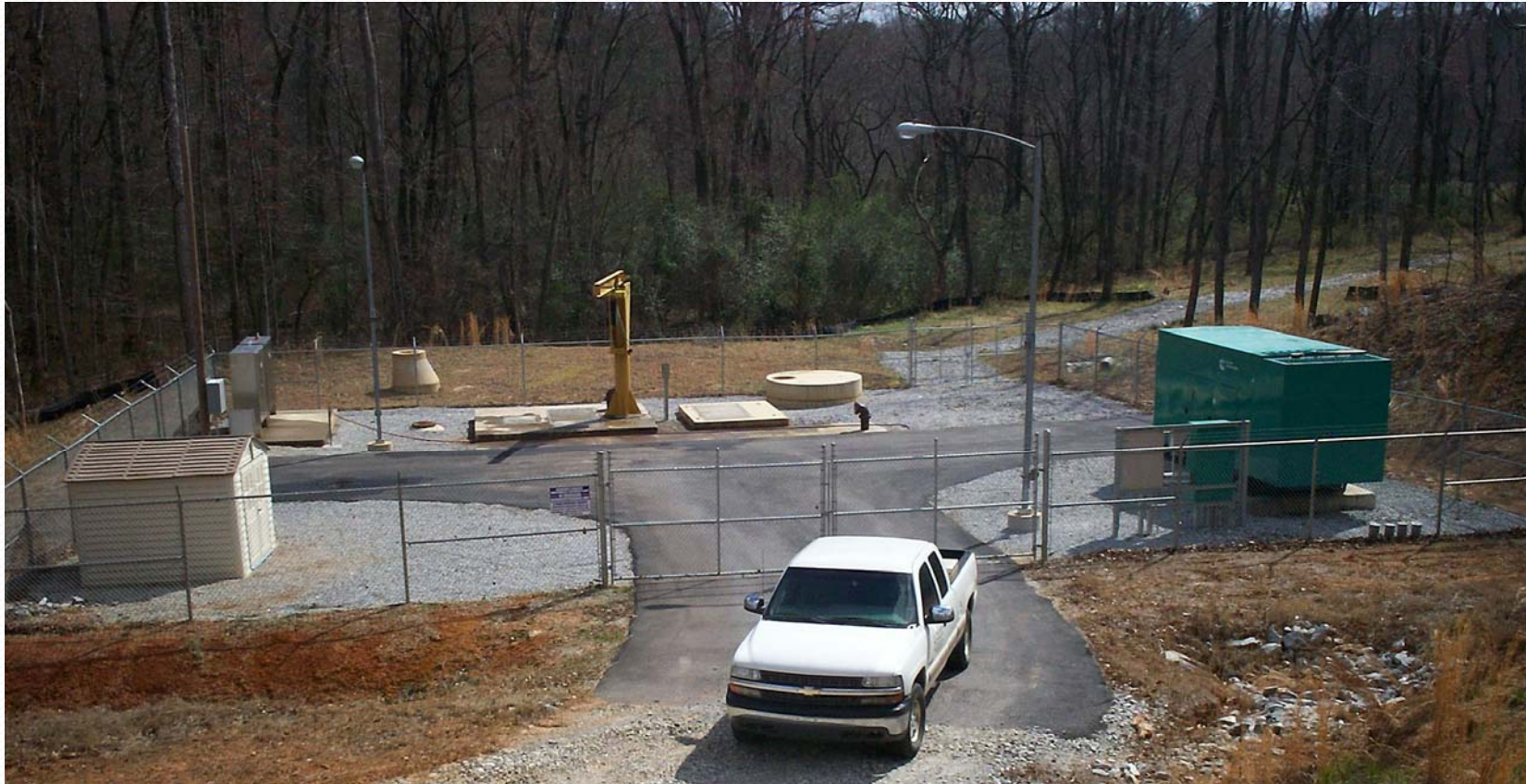


# Troublesome Creek WWTP

## Influent Characteristics & Permit Limits

Parameter	Influent (Est.)	Permit Limit
Flow (MGD)	0.015	0.275
BOD <sub>5</sub>	230	5
TSS	225	5
NH <sub>3</sub>	25	NA
P	8	NA
Turbidity	N/A	3
Fecal	N/A	23

# Influent Pump Station



130 HP Tripex Flygt Submersible Pump Station

# Headworks



Helisieve Spiral Screening Unit

# Orbal Aeration



Orbal Oxidation Ditch. The Sun City Peachtree Golf Course and Single Family Homes are in the background

# Clarification



Two Circular Clarifiers are sized for an upgrade to 550,000 GPD

# Sand Filtration



DynaSand Filters with Reject Pond in background

# Chlorine Disinfection



Chlorine Contact Chamber capable of disinfecting 550,000 GPD.  
Effluent Holding Pond is in background

# Sludge Digestion



Two Aerobic Sludge Digesters for 275,000 GPD; one additional Digester for 550,000 GPD Upgrade

# Chemical Building and Air Compressor



Chemical Building with Air Compressor for Sand Filters

# Administration Building



Administration Building is expandable as needs arise